



## Elm Class Newsletter – Term 5

### Welcome back to Term 5

We hope you have enjoyed the Easter break. As the days are beginning to become longer and warmer, we have lots of exciting learning opportunities planned for this term. As always, Terms 5 and 6 will have a focus on the Arts.

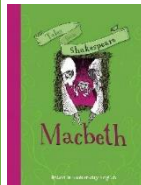


### Maths

We will focus on geometry and shape. We will be using our multiplication knowledge to calculate the area and perimeter of different shapes. We will learn how to reflect and translate across four quadrants by reading co-ordinates accurately. We will continue to revise our calculation skills to build our confidence with these and to improve our speed and accuracy. Our KIRF (Key Instant Recall Fact) will be 'I can recall metric conversions'.



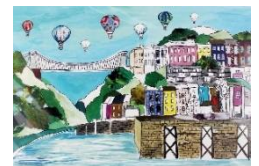
### English



Our text for this term will be 'Macbeth' by William Shakespeare. We will be recapping the year 6 punctuation that we have learnt so far this year with a particular focus on semi-colons, colons and dashes. We will be focusing on writing in a narrative style this term. We will use narrative texts to write descriptions of characters including using dialogue to show characteristics and using a range of devices to ensure cohesion within and across paragraphs.

### Connected Curriculum

Our curriculum question for this term will be 'How has Bristol shaped the Arts?' Following on from our music bang day, we will be investigating and exploring how sound travels through vibrations. We will also be studying the work of a Bristol born artist - Emmeline Simpson – and creating our own artwork inspired by her style using watercolours and ink pens. Additionally, we will be learning about the history of the Windrush and how this influenced music within the city of Bristol.



### Home Learning

We ask that you support your child to read at home at least 3 times per week. Please record what they have read in their reading diary and sign and date it. Please ensure that they bring their book and diary to school every day.

Homework:	Set on:	Return by:
Spelling, Punctuation and Grammar	Monday	The following Monday
Maths	Wednesday	The following Wednesday
Reading	Thursday	The following Thursday

Your child will also have a Times Table Rockstars login and we would like all children to practise their mental maths facts on this at least 3 times per week as well.

### PE

PE will take place on **Wednesday** and **Thursday**. Please ensure that your child wears the correct PE kit to school on these days. This includes a **plain** house-coloured t-shirt, plain black tracksuit bottoms/leggings/shorts and trainers. The normal Elm Park sweatshirt or PE hoodie must be worn.

### Water bottles and snacks

Please ensure that your child brings a **full** water bottle to school with them every day. Your child may also bring fruit or a healthy snack for morning playtime (no crisps, chocolate bars etc. please).



If you have any questions or concerns, please contact the office to arrange a phone call from me. Thank you for your continued support.  
Miss Griffiths