



Dates for your diary

October – Black History Month

17.10.25 – Stand against Racism – show the red card!

17.10.25 – 20.10.25 – PGL Year 6

17.10.25 – Halloween Disco

21.10.25 – Whole School Flu Vaccine

21.10.25 – PTFA meeting 7:30pm

24.10.25 – PTFA tuck shop and end of term

3.11.25 – Term 2 starts

Important notice

Reminder: Please can you make sure that you are not using your mobile while on school property. This includes the school playground. Many thanks.



Thank you to Ms Dykes for organising such a positive World Mental Health Day and the NSPCC workshops.

Thank you to Mrs Harris and the Year 1 and 2 team for organising such a wonderful trip to the British Aerospace Museum.

Thank you to Ms Turner, Mrs Harris, Miss Gurnett, Ms Windett, Mrs Lugg and Mrs Keeping a wonderful time at Deanfield with our incredible Year 5s.

A note from Mrs Bond...

Inspiring Learners

We were delighted to welcome the **NSPCC** into school this term for a special assembly and a series of workshops. The children listened so carefully and showed real maturity when learning about how to speak out and stay safe. The sessions gave them strategies to recognise when something doesn't feel right, who they can turn to for help, and the confidence to talk about their worries. It was inspiring to see our pupils taking such important messages on board. Families can also access useful advice and guidance to keep children safe at home and online via the NSPCC website.

We also marked **World Mental Health Day** by wearing yellow and raising awareness for mental health in young people. It was heartwarming to see our school community come together, with every class joining in. Together, we raised over **£120 for Young Minds**, a charity dedicated to supporting the mental health of children and young people. The hall and classrooms were filled with a sea of yellow – a simple but powerful reminder that talking about our feelings and supporting one another really does make a difference. A huge thank you to Ms Dykes for all of her organisation behind the scenes to ensure that today was such a success!

Enriching Lives

Our **Year 1 and Year 2** pupils had an exciting visit to the **British Aerospace Museum**, where they immersed themselves in the fascinating history of flight. The children explored how air travel has developed over time, from the earliest aircraft to the supersonic Concorde. They enjoyed climbing aboard planes, trying interactive exhibits, and hearing stories about how travel has changed people's lives across the world. The trip really brought history and science to life and sparked lots of curiosity and questions back in the classroom.

Meanwhile, **Year 5** had a brilliant experience during their Deanfield activity day, followed by a very special overnight stay at school. The children took part in team-building challenges and outdoor activities during the day, which encouraged problem-solving, resilience, and collaboration. In the evening, they enjoyed toasting s'mores, tucking into pizza and chicken nuggets, partying the night away with a fun-filled disco, and relaxing with a movie night in their pyjamas before sleeping over at school. Breakfast together the next morning rounded off the experience perfectly. This unique opportunity gave the children a taste of independence while strengthening friendships and creating memories that will last for years to come.



A few pictures from our nature walk and talk and mindfulness colouring.

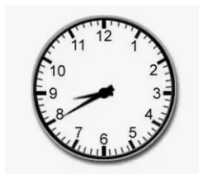
Achieving Together

On Friday 17th October, Elm Park would like to invite all children (and parents) to join the national awareness campaign to Show Racism The Red Card. Their statement to: Change Hearts, Change Lives, Change Minds resonates so much with our focus on Black History Month and our core values of kindness and respect. Join us to become 1 of the 1 million people across the UK that Show Racism the Red Card is hoping will come together and show that we are stronger united. For further information about this incredible cause, please follow the link: [Wear Red Day - Show Racism the Red Card](#)

Our **Harvest Assembly** was a wonderful celebration of community spirit. The children sang beautifully, filling the hall with joyful voices and sharing songs that reminded us of the importance of thankfulness. A huge thank you to all our families for your generosity in donating to **Yate Foodbank** – your contributions will help families across our local community at a time when support is needed more than ever.

As part of our ongoing commitment to supporting one another, we would also like to remind families that we have our **own school foodbank** available. This can be accessed discreetly by any family who may need a little extra help. If you feel this service could benefit you, please do not hesitate to get in touch with us. Together, we can ensure that no member of our school community goes without.

We are excited to welcome a gentleman from Yate foodbank, who will be coming to talk with the children about the important role the foodbank plays in our local community and give Elm Park community a personal thank you from the whole team at the foodbank.



Please remember that every minute of school counts. The gate opens at 8:40 to welcome all children and closes at 8:50am. Please ensure that your child arrives at this time so that they have the time to settle prior to learning beginning at 8:55am.

Parent WhatsApp group. Oh, my word! These play such a vital role in helping you to remember upcoming events, PE days and INSET days! Please could I just remind families that these should be used for positive reasons. If you have any concerns in relation to school, please come and speak with staff members so that we can support you rather than posting them on the group chat.



The Car Park. A huge thank you to all families, who have read my many messages over the course of the last 5 weeks. As previously shared, during collection and drop off times the car park is for staff and blue badge holders only. We continue see families, who do not have a blue badge, pulling into the car park to drop children off or pick them up. Please can I politely ask that you park elsewhere. With grateful thanks for your support to keep children safe.

And finally, we have just completed a review of our attendance policy and our online safety and acceptable use policy. These can both be found on the school website by visiting the policy page: [Elm Park Primary School - Policies](#)

Don't forget to look at the Yearly Planner for other upcoming events or check out our online calendar on the school website: [Elm Park Primary School - Calendar](#)

Wishing you all a very enjoyable weekend.

Carol Bond

Head Teacher